



Nancy Hassan
Interior Designer
Portfolio



About Me

Interior Designer based in Vancouver with **7+ years of combined professional and academic experience** across residential, hospitality, retail, and workplace environments. My work focuses on circulation clarity, material expression, and human-centered design, translating spatial concepts into well-resolved, functional interiors.

My experience includes **professional practice, freelance work, and advanced design studies**, with a strong emphasis on space planning, zoning strategies, and visual communication through 3D modeling and documentation.

Expertise:

Interior Design · Space Planning · Zoning

Material & Finish Selection · Lighting Strategy

FF&E Coordination · 3D Visualization

Construction & Interior Documentation

Software:

AutoCAD · Revit · SketchUp

V-Ray · Enscape · Lumion

Adobe Creative Suite



Project 01



Hospitality/Lobby

Project 02



Residential/Kitchen

Project 03



Residential/Master Bedroom

Project 04



Retail/Perfumes & Cosmetics

Project 05



Commercial/Company Office

Hotel Lobby Design

Hospitality Interior

The lobby is conceived as a **transitional social space**, mediating between arrival, orientation, and pause. Seating groupings and reception elements are arranged to intuitively guide guests while allowing moments of rest and interaction.

Rich finishes, classical proportions, and warm lighting establish a welcoming first impression, supporting both functional circulation and the hotel's overall hospitality identity.



Concept

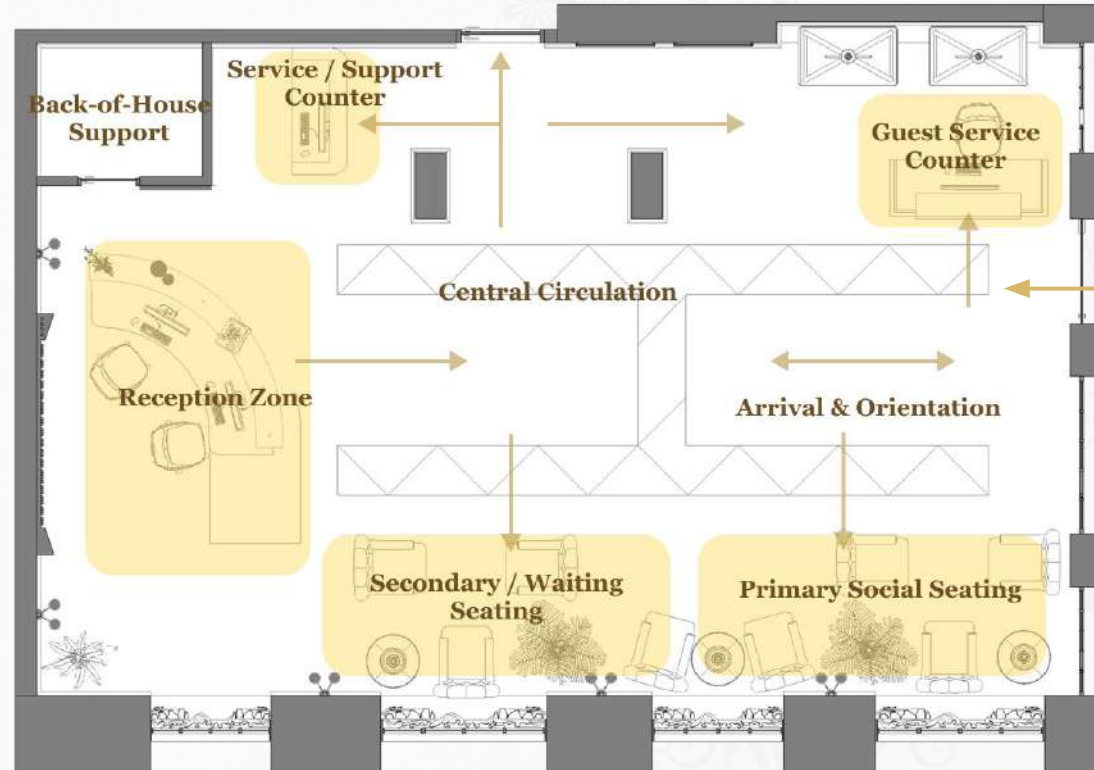
The lobby is conceived as a ceremonial arrival space, where symmetry, proportion, and rhythm establish a sense of calm authority. Movement is intentional and axial, framing moments of pause and social interaction while reinforcing a refined hospitality experience rooted in elegance and order



Zoning & Circulation

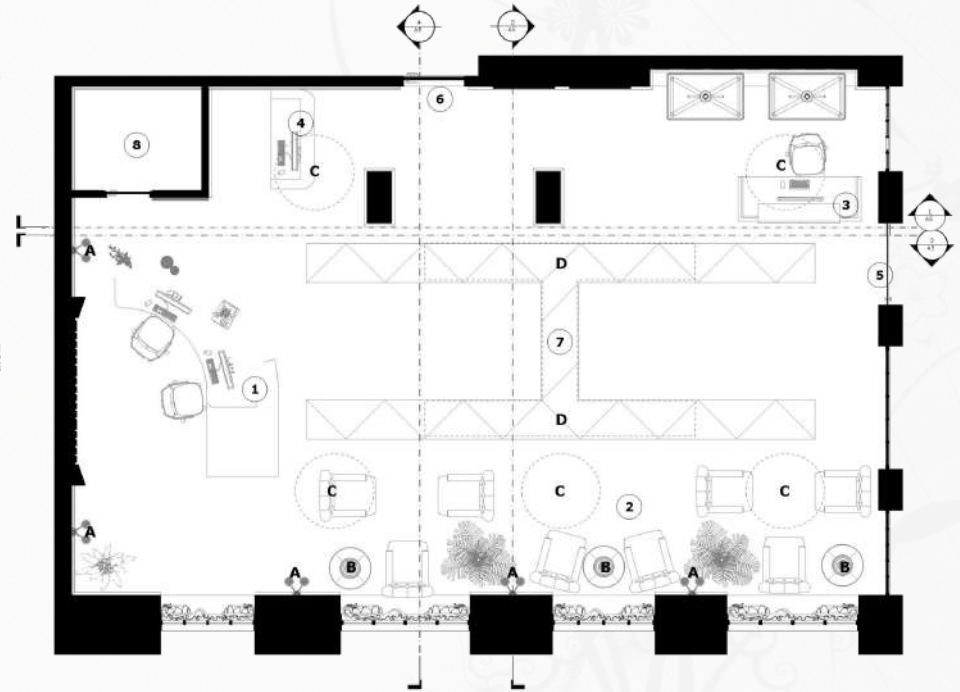
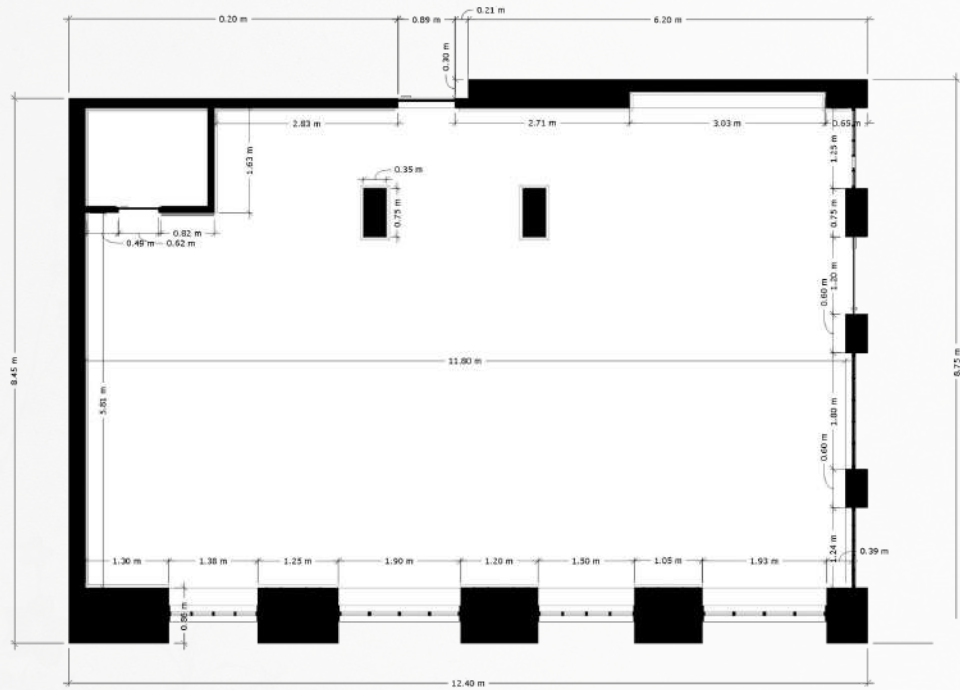
The lobby layout organizes circulation from arrival to key guest functions.

- **Arrival & Orientation:** Entry zone directs guests toward reception and seating areas.
- **Reception Zone:** Positioned for visibility and efficient guest service.
- **Social Seating:** Primary and secondary seating areas support waiting and informal interaction.
- **Support Zones:** Service counters and back-of-house functions are discreetly located.
- **Primary Circulation:** A central path connects all zones without interrupting seating areas.



Documentation Technical drawings

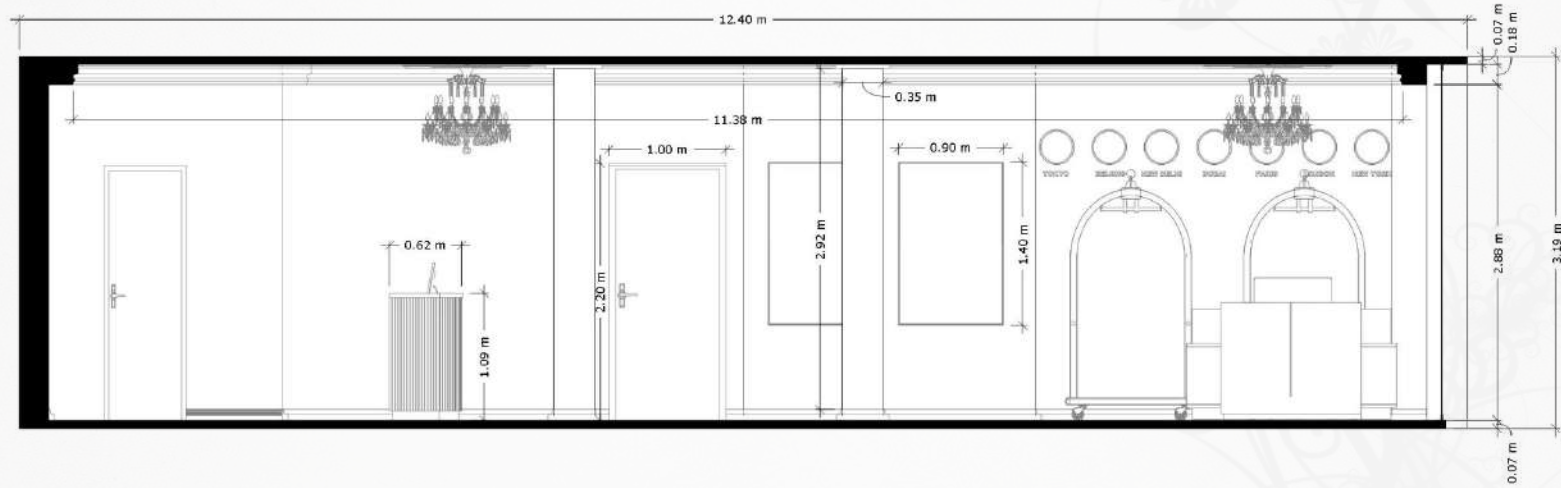
Plans



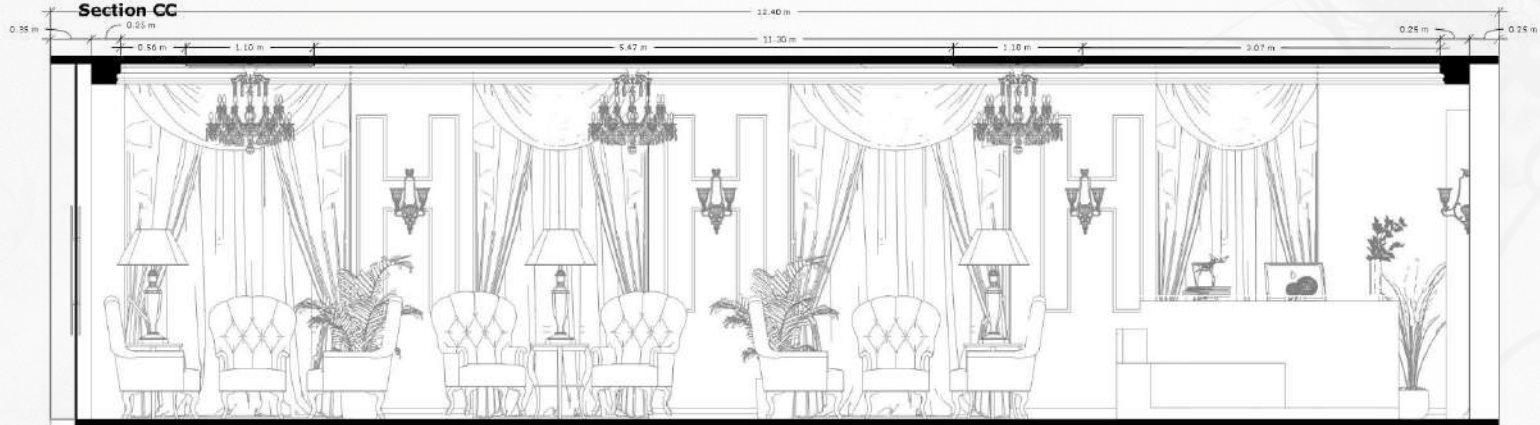
Documentation Technical drawings

Sections

Section DD



Section CC



Material & Lighting Strategy

Material Palette



- Natural stone flooring selected for durability and timeless elegance in high-traffic areas
- Warm wood finishes introduced to soften the space and enhance comfort
- Brushed metal accents used to add subtle luxury and visual contrast
- Upholstered seating in neutral to support a calm and welcoming atmosphere

A restrained material palette was selected to balance durability and warmth within a high-traffic hospitality environment.

Layered lighting enhances spatial depth and reinforces zoning while creating a welcoming atmosphere.

Lighting Strategy



Ambient Lighting

Concealed cove lighting provides soft, even illumination throughout the lobby



Accent Lighting

Feature pendants and wall lighting highlight architectural elements and seating zones



Task Lighting

Focused lighting at reception and service area supports functionality and clarity



Design Details





Kitchen Design

Residential Interior

This kitchen is designed around **efficiency and visual continuity**, where clean lines and material balance support everyday use. The layout reinforces intuitive movement between preparation, cooking, and gathering zones.

Natural textures and controlled lighting soften the modern framework, creating a kitchen that feels practical, cohesive, and seamlessly integrated into the home's daily rhythm.



Concept

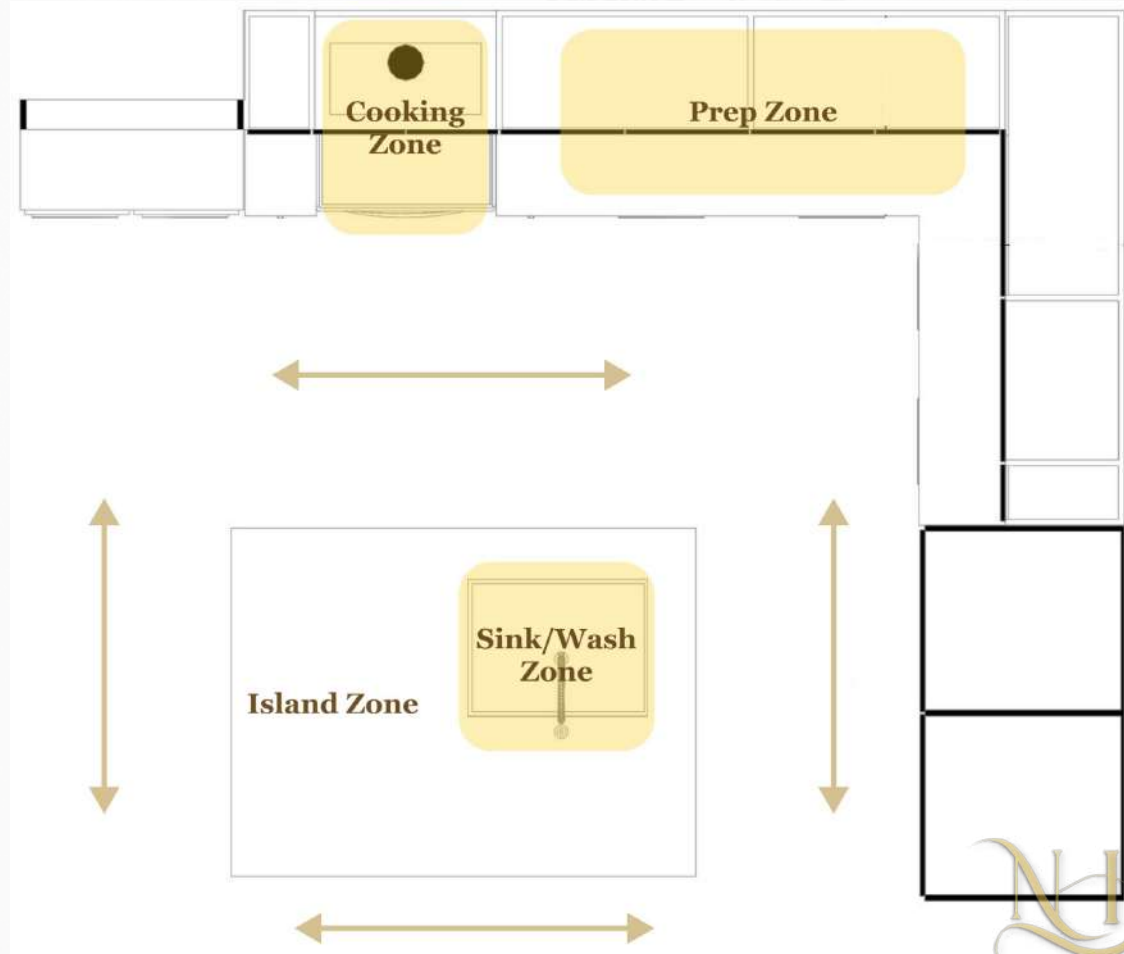
This kitchen is designed as a functional engine for daily life, prioritizing efficiency, clarity, and tactile comfort. Clean lines and durable surfaces support active use, while warm material contrasts soften the space and encourage informal gathering without visual excess.



Zoning & Circulation

The kitchen layout is organized into functional zones that support an efficient workflow.

- **Cooking Zone:** Located along the main counter for focused food preparation.
- **Prep Zone:** Continuous work surface supports daily cooking tasks.
- **Wash Zone:** Sink positioned within the island for central access.
- **Island Zone:** Acts as a shared working and social hub.
- **Circulation:** Clear paths minimize cross-traffic and support intuitive movement.



Material & Lighting Strategy

The material palette was selected to balance warmth, durability, and visual calm within a modern residential kitchen.

Natural wood finishes introduce warmth and texture, while matte grey cabinetry provides a calm contemporary backdrop. Stone surfaces were applied to the island and worktops to enhance durability and define key functional elements.



Rendered View

Lighting Strategy

- **Ambient Lighting:** Recessed ceiling lights provide overall illumination and visual balance
- **Task Lighting:** Integrated under-cabinet lighting ensures clear visibility across preparation and cooking surfaces
- **Accent Lighting:** Subtle integrated lighting at shelving and island areas enhances material texture, spatial depth, and nighttime ambience

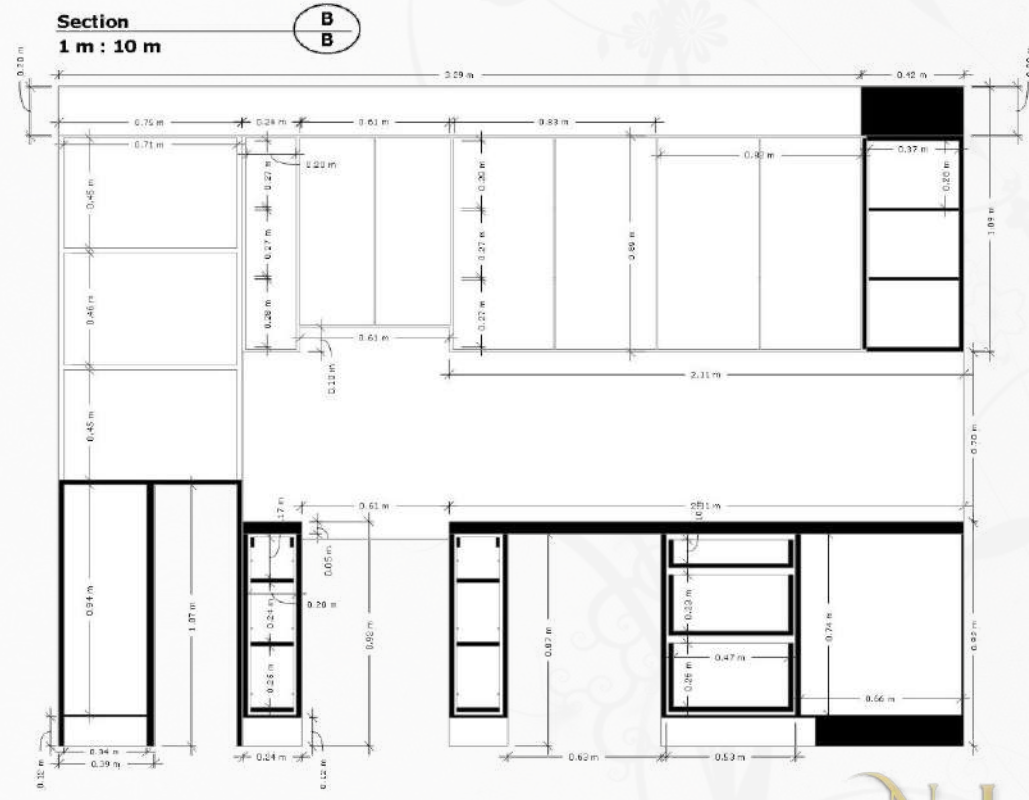
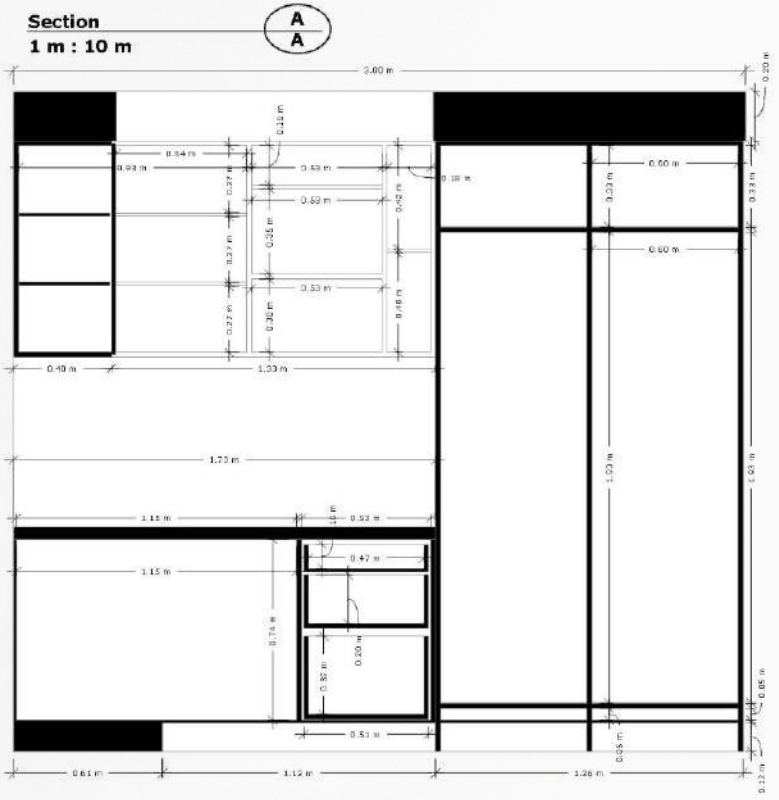


Completed Space



Documentation & Details

Sections



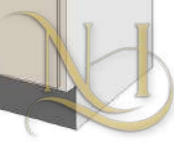
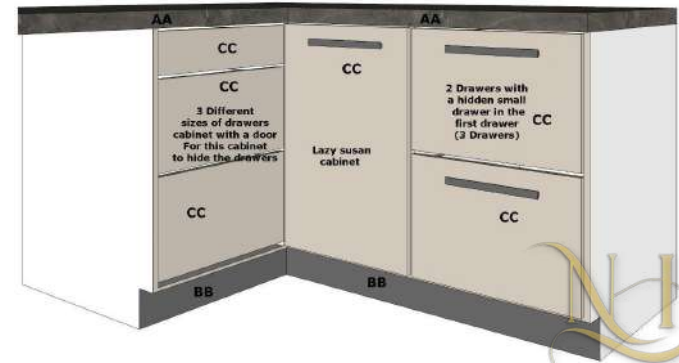
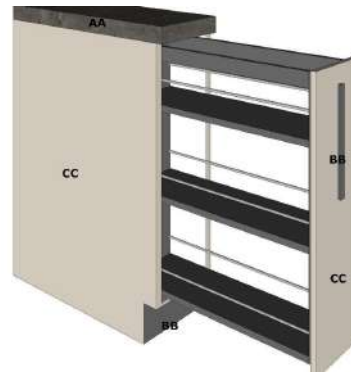
Custom Cabinetry Overview

The kitchen cabinetry was custom-designed to optimize storage, maintain visual continuity, and support a clean, modern aesthetic.

Full-height cabinetry was used to maximize storage capacity while creating a seamless and uncluttered backdrop. Handle-integrated detailing reinforces the minimal language of the space, allowing materials and proportions to remain the primary visual focus.

A contrast between matte grey finishes and warm wood accents was carefully balanced to introduce depth without overwhelming the space. Open shelving elements were selectively integrated to soften the composition and provide moments of visual relief.

Cabinet layout, alignment, and proportions were designed to work cohesively with appliances and lighting, ensuring both functional efficiency and a refined overall appearance.





Master Bedroom Design

Residential Interior

This bedroom is conceived as a **rest-driven spatial composition**, where proportion, symmetry, and soft illumination establish a sense of quiet order. The design prioritizes visual calm by reducing visual noise and anchoring the space around a centered sleeping zone.

Warm finishes, restrained detailing, and layered ambient lighting work together to create an environment that supports relaxation, privacy, and nightly retreat without excess ornamentation.



Concept

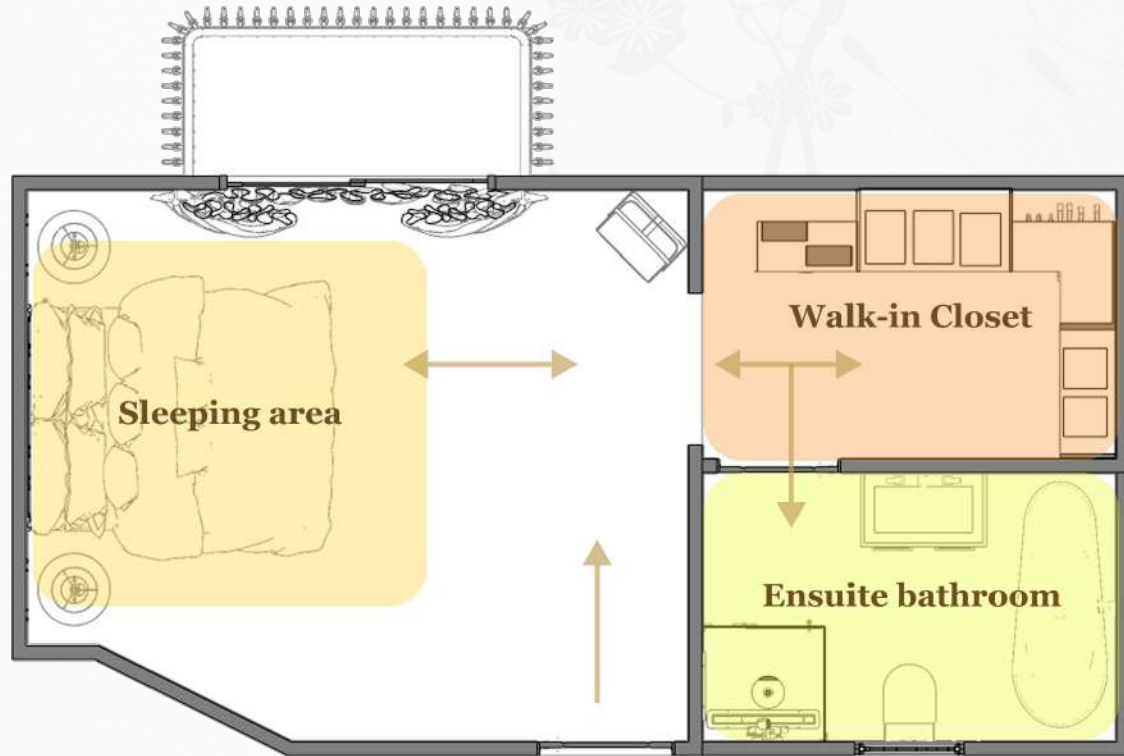
The master bedroom is envisioned as a private retreat defined by simplicity and spatial continuity. The layout minimizes visual noise, allowing proportion, material calmness, and subtle detailing to support rest, routine, and a sense of personal enclosure.



Zoning & Circulation

The master bedroom is organized into distinct zones that support privacy and daily routines.

- **Sleeping Zone:** Positioned away from circulation for comfort and rest.
- **Storage Zone:** Walk-in closet located adjacent to the sleeping area for easy access.
- **Personal Care Zone:** Ensuite bathroom separated to maintain privacy.
- **Circulation:** A clear internal path connects zones with minimal visual overlap.

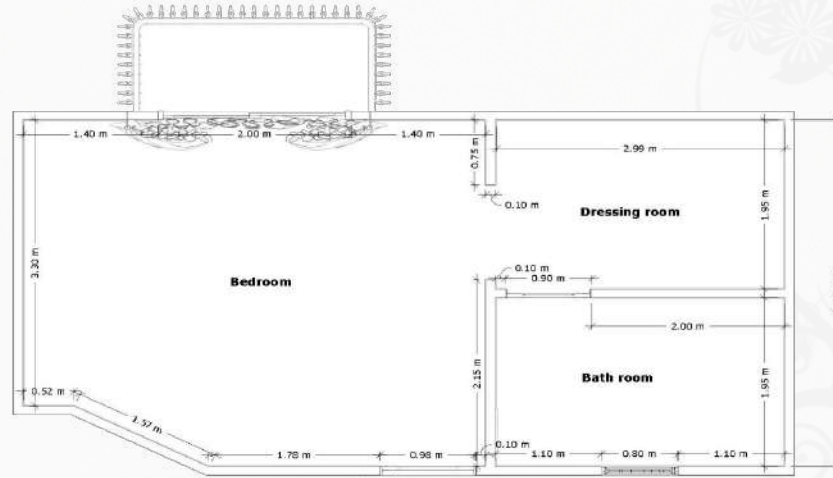


Documentation Technical drawings

Plans

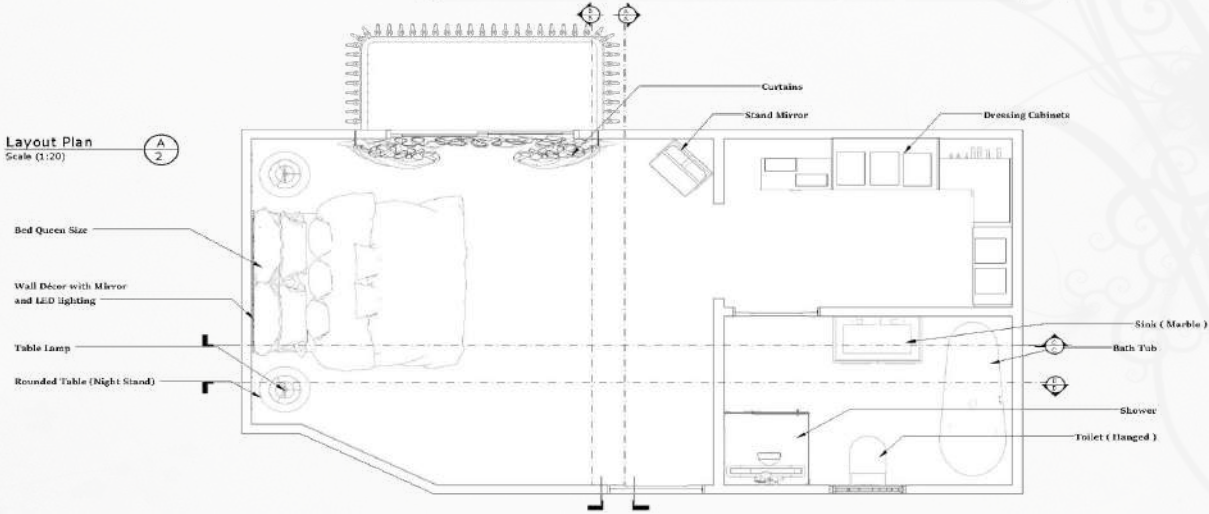
Floor Plan
Scale (1:20)

A
1



Layout Plan
Scale (1:20)

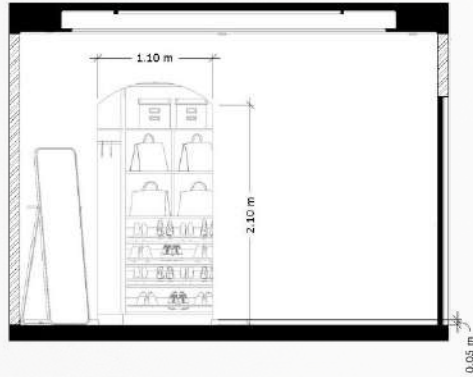
A
2



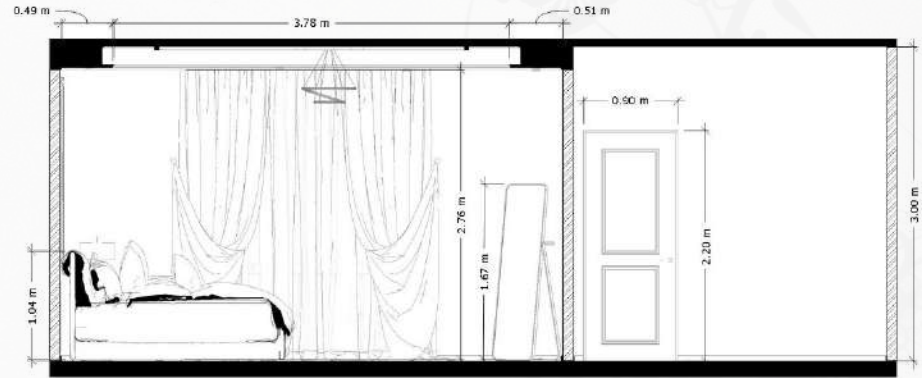
Documentation Technical drawings

Sections

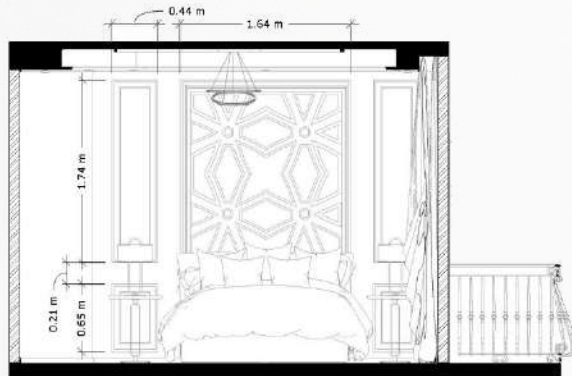
Section
Scale (1:20)



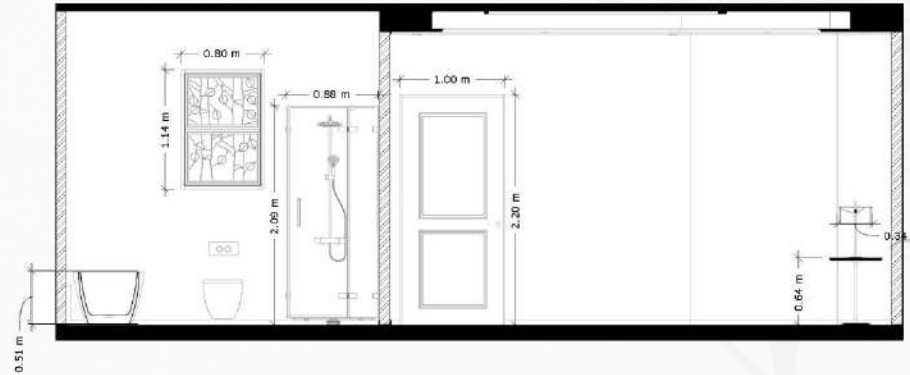
Section
Scale (1:20)



Section
Scale (1:20)



Section
Scale (1:20)



Material & Lighting

The material palette combines warm neutral tones, marble finishes, and soft textiles to create a refined yet comfortable bedroom environment.



Lighting Strategy

A layered lighting approach combines ambient, accent, and task lighting to enhance architectural details and support comfort throughout the space.



Luxury Perfume & Cosmetics Boutique

Retail Interior

This boutique is designed as a **controlled retail sequence**, guiding customers through product zones with deliberate pacing and visual hierarchy. The layout emphasizes clarity of movement while allowing featured displays to act as moments of pause and engagement.

Material contrast, reflective surfaces, and accent lighting are used to elevate the sensory experience, reinforcing brand presence while maintaining a refined, gallery-like atmosphere.



Concept

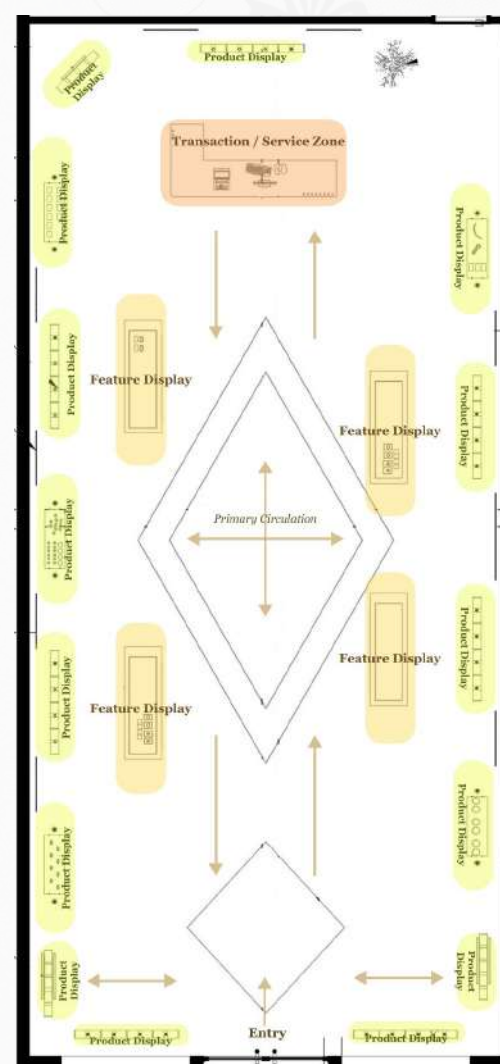
The boutique is shaped as a curated journey rather than a static display. Spatial sequencing, controlled sightlines, and layered illumination guide customers intuitively through the space, elevating products through contrast, precision, and a strong architectural identity



Zoning & Circulation

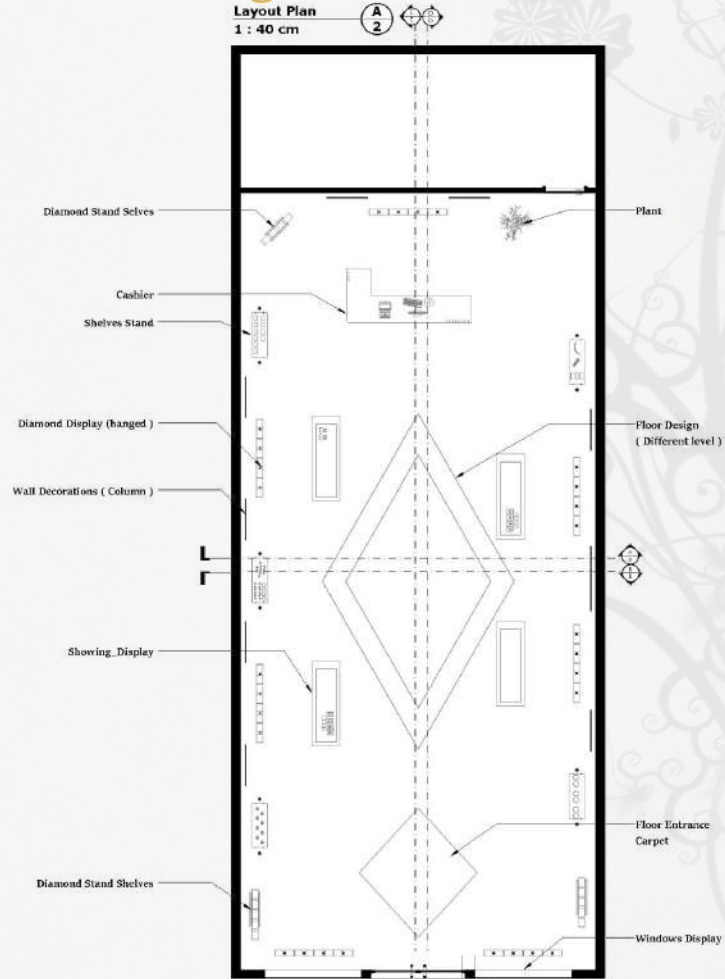
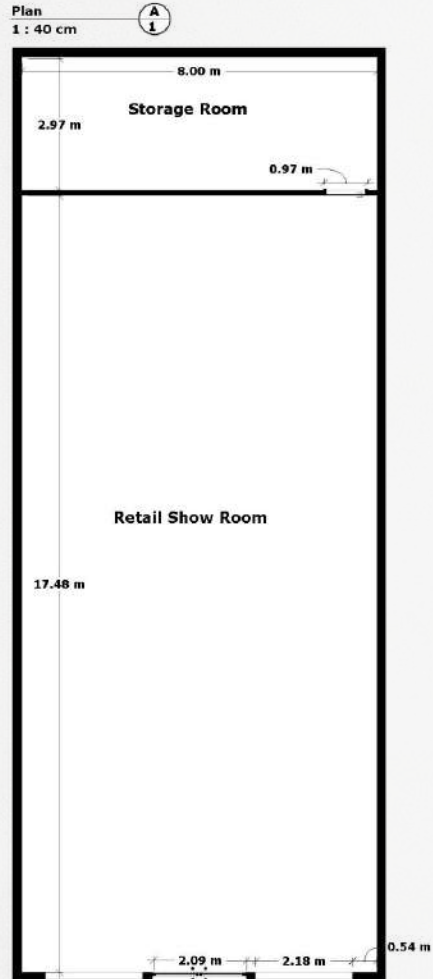
The retail layout is organized into clear zones that guide customer movement and support product visibility.

- **Primary Circulation:** A central axis leads customers from entry through feature displays toward checkout.
- **Product Display Zones:** Perimeter shelving and central islands showcase products and encourage browsing.
- **Feature Display:** A central focal zone anchors the layout and creates moments of pause.
- **Service Zone:** Checkout and support functions are positioned toward the rear for clarity and flow.



Documentation Technical drawings

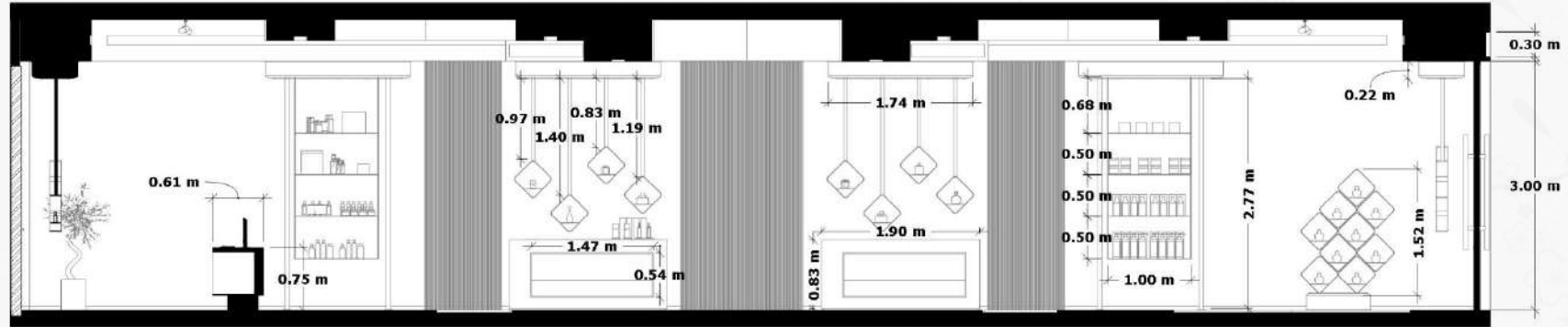
Plans



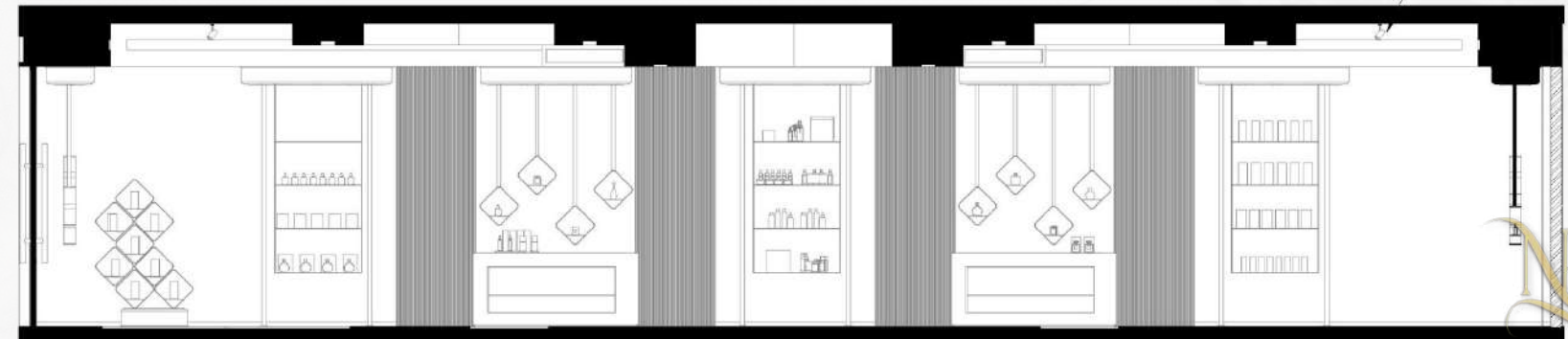
Documentation Technical drawings

Sections

Section
1 : 25 cm



Section
1 : 25 cm



Material & Lighting

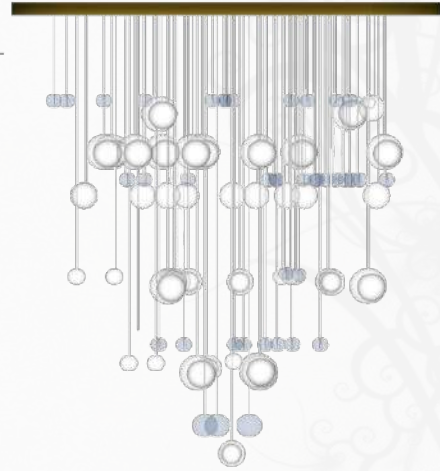
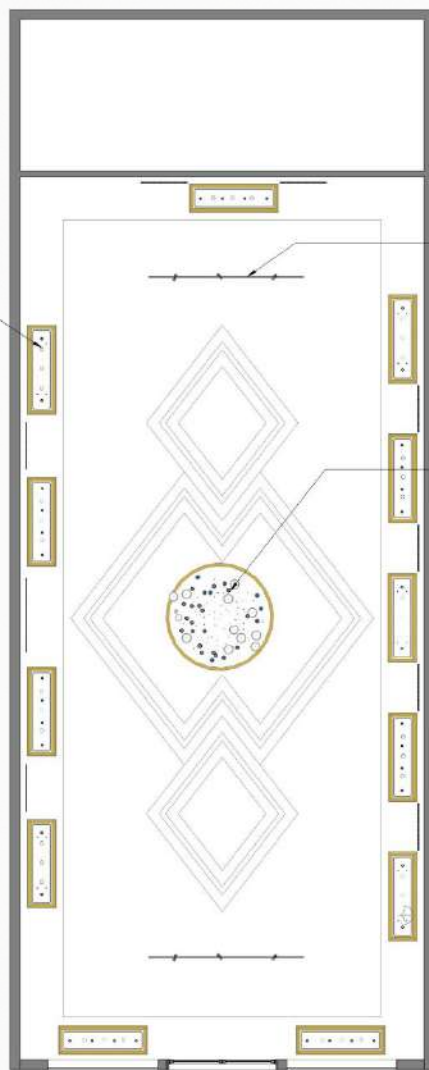
The interior palette combines refined stone finishes, warm metallic accents, and soft neutral surfaces to create a calm and luxurious retail atmosphere. Layered materials enhance depth and texture while maintaining visual balance and elegance.

Lighting Strategy

Lighting is designed as a key architectural feature. Sculptural pendant lights provide focal illumination, recessed ceiling lighting ensures even ambient light, and integrated wall washing highlights vertical elements and product displays. Together, the lighting strategy enhances product visibility while reinforcing the brand's premium identity.



Ceiling (RCP)





Office Design

Commercial Interior

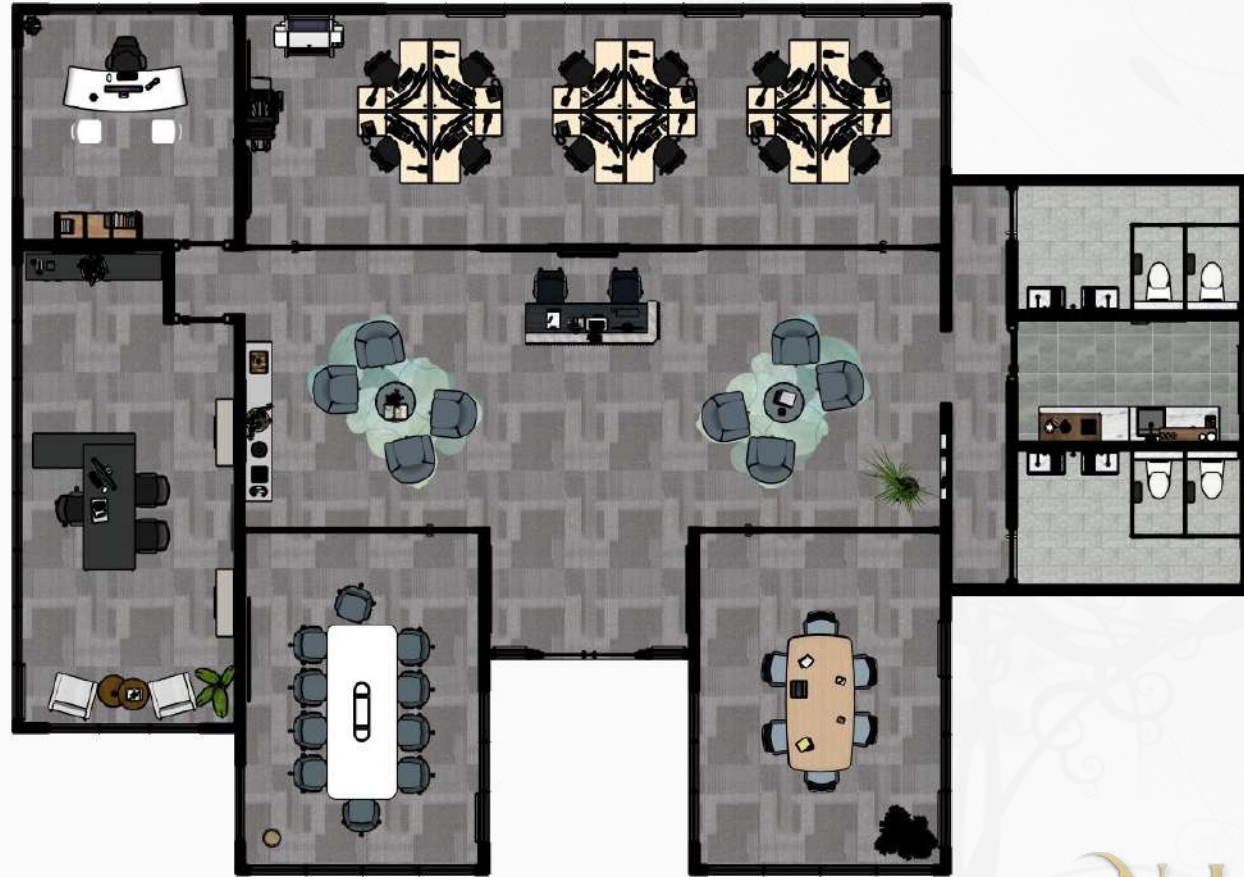
This office concept focuses on **clarity, structure, and professional identity**, using strong material definition and spatial organization to support daily operations. Open and enclosed areas are carefully balanced to allow collaboration without compromising concentration.

A restrained palette and architectural lighting define key zones, reinforcing focus, efficiency, and a calm workplace environment aligned with contemporary corporate culture.



Concept

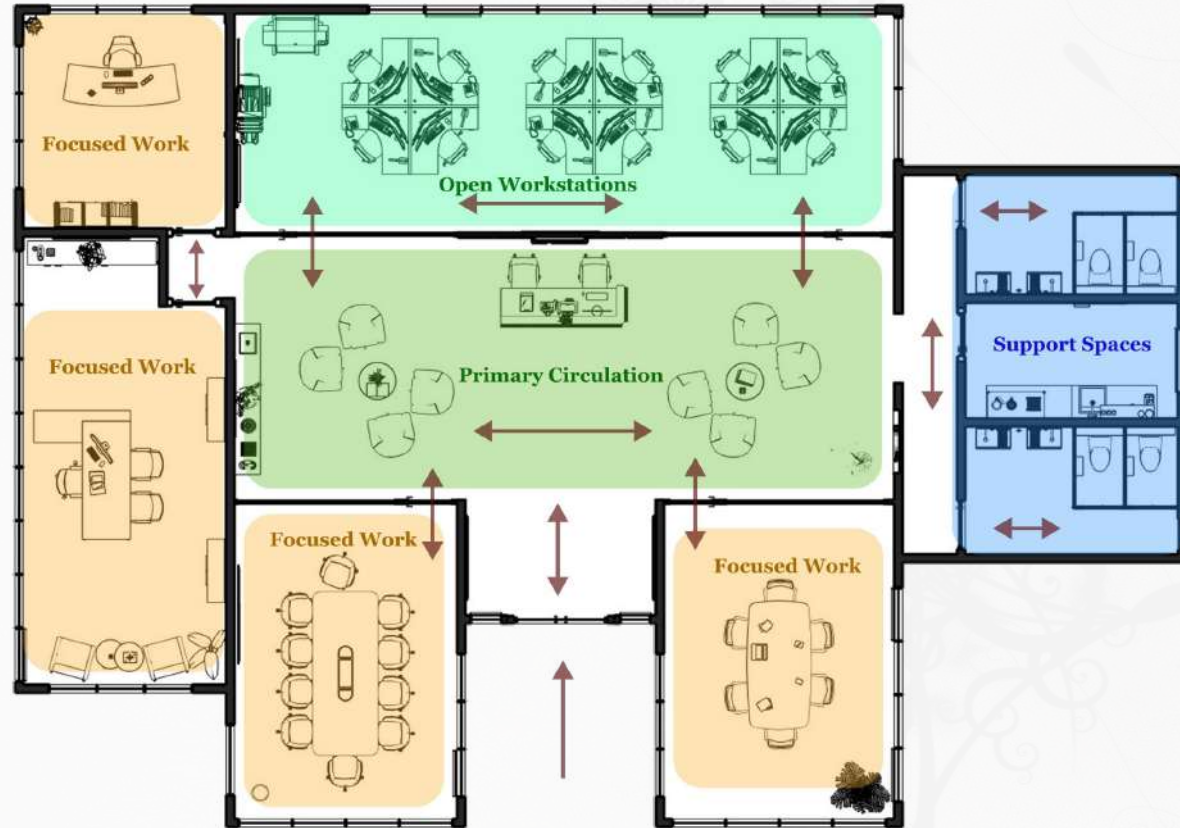
The office is structured as a performance-driven workspace, balancing openness with controlled separation. Spatial clarity and acoustic zoning support focus and collaboration, while a restrained material palette reinforces professionalism, comfort, and long-term adaptability.



Zoning & Circulation

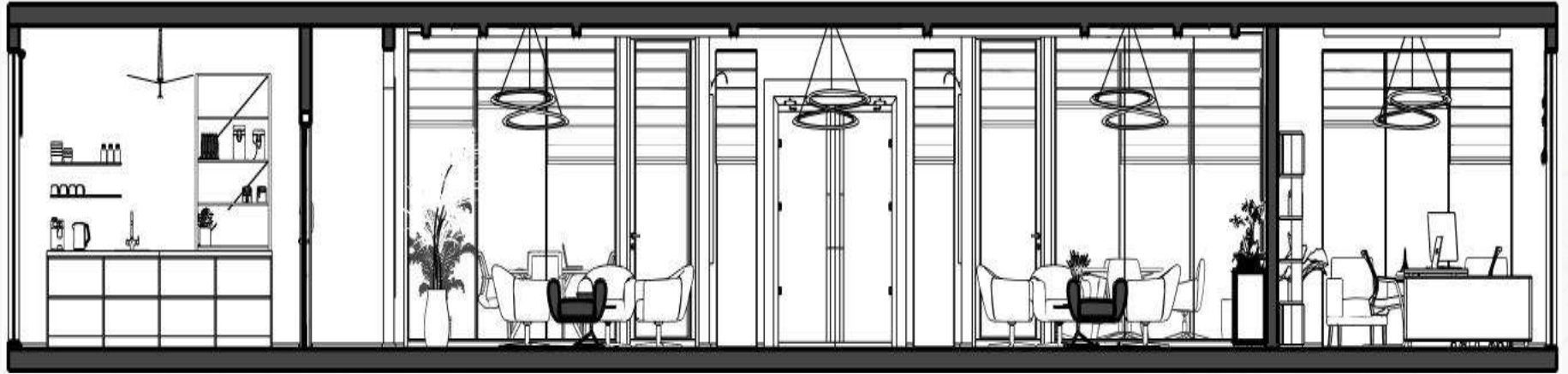
The office is organized into distinct zones that support collaboration, focus, and efficient movement.

- **Open Workstations:** Collaborative desk areas located along the open perimeter.
- **Focused Work:** Enclosed meeting rooms and quiet areas for privacy and concentration.
- **Support Spaces:** Kitchen, washrooms, and service areas grouped along the plan edges.
- **Primary Circulation:** A clear central circulation path connecting all zones.



Documentation Technical drawings

Sections



Material & Lighting

The material and lighting strategy supports a calm, professional work environment while reinforcing clarity, comfort, and visual balance throughout the office.

- **Material Strategy:** A neutral palette of durable finishes is combined with warm wood accents and soft textures to create a cohesive and welcoming workspace while supporting long-term daily use.
- **Lighting Strategy:** Layered lighting integrates ambient ceiling lighting with task lighting at work areas, ensuring visual comfort and supporting different modes of work across the office.





Thank you for taking time to explore my work.

If you'd like to discuss a project, collaboration, or career opportunity, I'd be happy to connect.

I design interiors that balance elegance, functionality, and emotional resonance. My work focuses on thoughtful spatial planning and high-quality visual storytelling, bringing concepts to life through proportion, materiality, and light.

Feel free to reach out via email or connect with me on LinkedIn.



explore more of my work

